

Pistolet pentru sudare MIG/MAG MB GRIP 401 D/ 501 D racire cu lichid



Date tehnice (EN 60 974-7):

Curent: 400 A / 500 A CO₂
350 A / 450 A amestec
M21 (DIN EN 439)
D.A.: 100%
Sarma: 1.0–1.6 mm

Pistolet Complet		Nr. art.			Gat	
Tip	Maner	3 m	4 m	5 m	Tip	Nr. art.
MB GRIP 401 D	Tip GRIP	033.0271	033.0272	033.0273	50°	033.0277
MB GRIP 501 D	Tip GRIP	034.0492	034.0493	034.0494	50°	034.0496

Consumabile:

Duza curent (reper 50)		M6	M8 •	Tub ghidare (reper 70 / 80)		
				3 m	4 m	5 m
E-Cu	Ø 1,0	140.0242	140.0313	122.0031	122.0036	122.0039
	Ø 1,2 •	140.0379	140.0442	122.0031	122.0036	122.0039
	Ø 1,4	140.0516	140.0533	122.0056	122.0060	122.0063
	Ø 1,6	140.0555	140.0587	122.0056	122.0060	122.0063
	Ø 2,4	—	140.0677	122.0073	122.0075	122.0076
E-Cu pt. Al	Ø 1,0	141.0006	141.0008	126.0021	126.0026	126.0028
	Ø 1,2	141.0010	141.0015	126.0021	126.0026	126.0029
	Ø 1,4	—	141.0055	126.0039	126.0042	126.0045
	Ø 1,6	141.0020	141.0022	126.0039	126.0042	126.0045
CuCrZr	Ø 1,0	140.0245	140.0316	127.0005	127.0007	127.0008
	Ø 1,2	140.0382	140.0445	127.0005	127.0007	127.0008
	Ø 1,4	140.0519	140.0536	127.0010	127.0012	127.0013
	Ø 1,6	140.0558	140.0590	127.0010	127.0012	127.0013
	Ø 2,4	—	140.0679	128.0024	128.0025	128.0027

Duza gaz (reper 100)

Tip	Nr. art.
Cilindrica Ø 20	145.0051
Conica Ø 16 •	145.0085
Conic ascutita Ø 14	145.0132

Difuzor gaz (reper 60)

Tip	Nr. art.
Standard •	030.0145
Long life	030.0037

Portduza curent (reper 2)

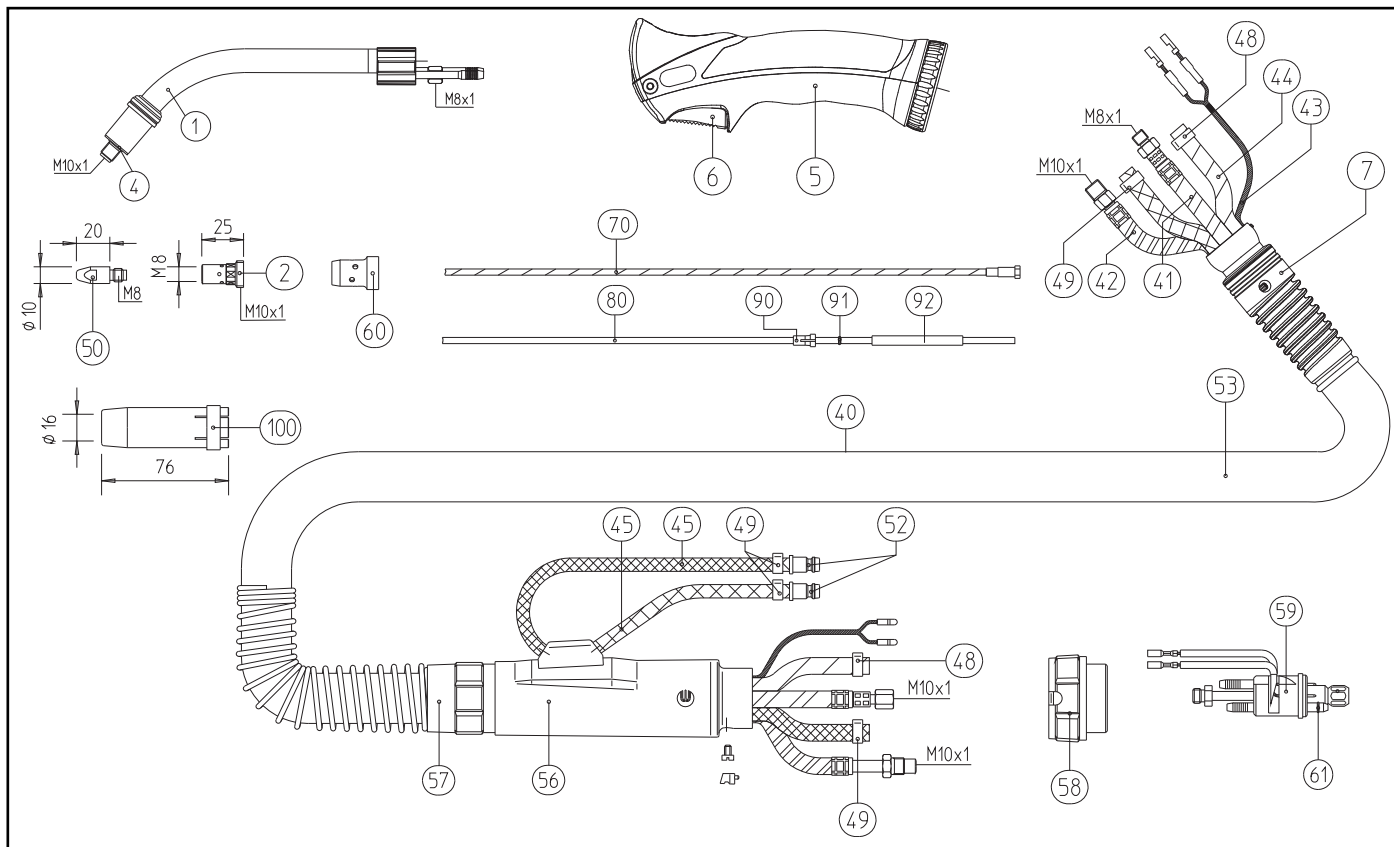
Tip	Nr. art.
M8 standard •	142.0022
M8 lunga	142.0027
M6 standard	142.0008

• Echipare initiala (standard)

La sudarea in curent pulsant, reduceti incarcarea cu 35%.

Technology for the Welder's World.





Reper	Descriere	Observatii	Nr. art.
1	Gat pistol MB GRIP 501 D, indoit 50°		034.0496
Fara fig.	Gat pistol MB GRIP 401 D, indoit 50°		033.0277
4	Izolator	20 buc.	030.0019
5	Maner GRIP		180.0127
6	Buton bipolar		185.0101
7	Articulație cu bila		400.1125
40	Pachet furtune complet	3 m	022.0202
	Pachet furtune complet	4 m	022.0203
	Pachet furtune complet	5 m	022.0204
41	Cablu curent	3 m	115.0065
	Cablu curent	4 m	115.0070
	Cablu curent	5 m	115.0074
42	Furtun conductor	3 m	156.0275
	Furtun conductor	4 m	156.0276
	Furtun conductor	5 m	156.0277
43	Cablu comanda bipolar	la metru	100.0019
44	Furtun gaz negru, Ø 4,9x1,5	la metru	109.0040
45	Furtun HDH lichid, Ø 5,5x1,5	la metru	109.0052
48	Clema Ø 8,7	20 buc.	171.0002
49	Clema cu inel Ø 9,5	20 buc.	173.0001
52	Niplu NW 5 mm / Ø 6,0 mm	20 buc.	501.0114
53	Furtun exterior Ø 25x1,5	la metru	107.0004
56	Maner protecție conector central		500.0342
57	Arc protecție		501.2236
58	Piulita conector central		500.0213
59	Conector central WZ-2		501.0015
61	O-ring 4x1	20 buc.	165.0002
90	Niplu pt. tub ghidare teflon Ø ext. 4,0 / Ø ext. 4,7	20 buc.	131.0001 / 131.0002
91	O-ring 3,5x6,5	20 buc.	165.0008
92	Tub capilar pt. tub ghidare teflon Ø ext. 4,0	250 mm / 500 mm	129.0468 / 129.0473

Technology for the Welder's World.



ABICOR BINZEL ROMANIA S.R.L.

Bld. Petrolului, nr. 10, Ploiesti, Prahova
 Tel: +40 244 406 650; +40 244 406 651
 Fax: +40 244 406 652
 E-mail: binzel@binzel-abicor.ro
 Internet: <http://www.binzel-abicor.ro>

